

CalTPA Data Analysis  
2018-2023  
For Education Department Retreat  
On May 9, 2023

Kelly Vaughn, TPA Director. [kvaughn@ndnu.edu](mailto:kvaughn@ndnu.edu)  
Stephanie Demaree, TPA Coordinator.  
[sdemaree@ndnu.edu](mailto:sdemaree@ndnu.edu)

# Context and Limitations

1. Data disaggregated by (a) credential program and/or (b) 2018-19 and 2019-present. It will not be shown by yearly progression
2. Residue from Covid-19 complications on teacher candidates' submission progress
3. More Spring 2023 candidates plan to submit after this report [5/18/23]
4. First time using EdReports for multiyear analysis, and not user friendly
5. Massaging data to account for Pearson's "Low N" where  $N < 10$
6. Score analysis does not include tabulation of condition codes

# NDNU Cycle 1 *First Attempt* Scores, 2018-now

<b>Cycle Name</b>	# Takers	# Pass	# Not Pass	% Pass	% Not Pass	Mean Total Scaled Score	Mean Total Scaled Score State
Mult Subj—Literacy 1	84	59	25	70.24%	29.76%	19.80	19.70
Sngl Subj-Art 1	2	2	0	100.00%	0.00%	28.50	24.40
Sngl Subj-English 1	12	10	2	83.33%	16.67%	20.30	23.20
Sngl Subj-Health Science 1	1	1	0	100.00%	0.00%	24.00	18.50
Sngl Subj-Mathematics 1	12	9	3	75.00%	25.00%	21.70	22.60
Sngl Subj-Music 1	2	0	2	0.00%	100.00%	13.00	21.90
Sngl Subj-Physical Education 1	11	8	3	72.73%	27.27%	22.20	22.10
Sngl Subj-Science 1	7	7	0	100.00%	0.00%	24.86	20.20
Sngl Subj-Social Science 1	12	11	1	91.67%	8.33%	23.30	21.70
World Languages 1	12	10	2	83.33%	16.67%	20.40	20.60
<b>TOTAL/CUMULATIVE</b>	<b>155</b>	<b>117</b>	<b>38</b>	<b>77.63%</b>	<b>22.37%</b>	<b>21.81</b>	<b>21.49</b>

# NDNU Cycle 2 *First* Attempt Scores, 2018-now

Cycle Name	# Takers	# Pass	# Not Pass	% Pass	% Not Pass	Mean Total Scaled Score	Mean Total Scaled Score State
Mult Subj—Math 2	65	48	17	73.85%	26.15%	22.40	22.10
Sngl Subj-Art 2	2	1	1	50.00%	50.00%	21.00	25.20
Sngl Subj-English 2	8	8	0	100.00%	0.00%	25.75	23.70
Sngl Subj-Health Science 2	1	1	0	100.00%	0.00%	23.00	20.50
Sngl Subj-Mathematics 2	8	8	0	100.00%	0.00%	26.63	24.90
Sngl Subj-Music 2	1	0	1	0.00%	100.00%	16.00	23.60
Sngl Subj-Physical Education 2	10	8	2	80.00%	20.00%	21.80	22.30
Sngl Subj-Science 2	6	4	2	66.67%	33.33%	24.00	22.30
Sngl Subj-Social Science 2	9	9	0	100.00%	0.00%	26.56	23.60
World Languages 2	9	9	0	100.00%	0.00%	27.56	23.50
TOTAL/CUMULATIVE	119	96	23	77.05%	22.95%	23.47	23.17

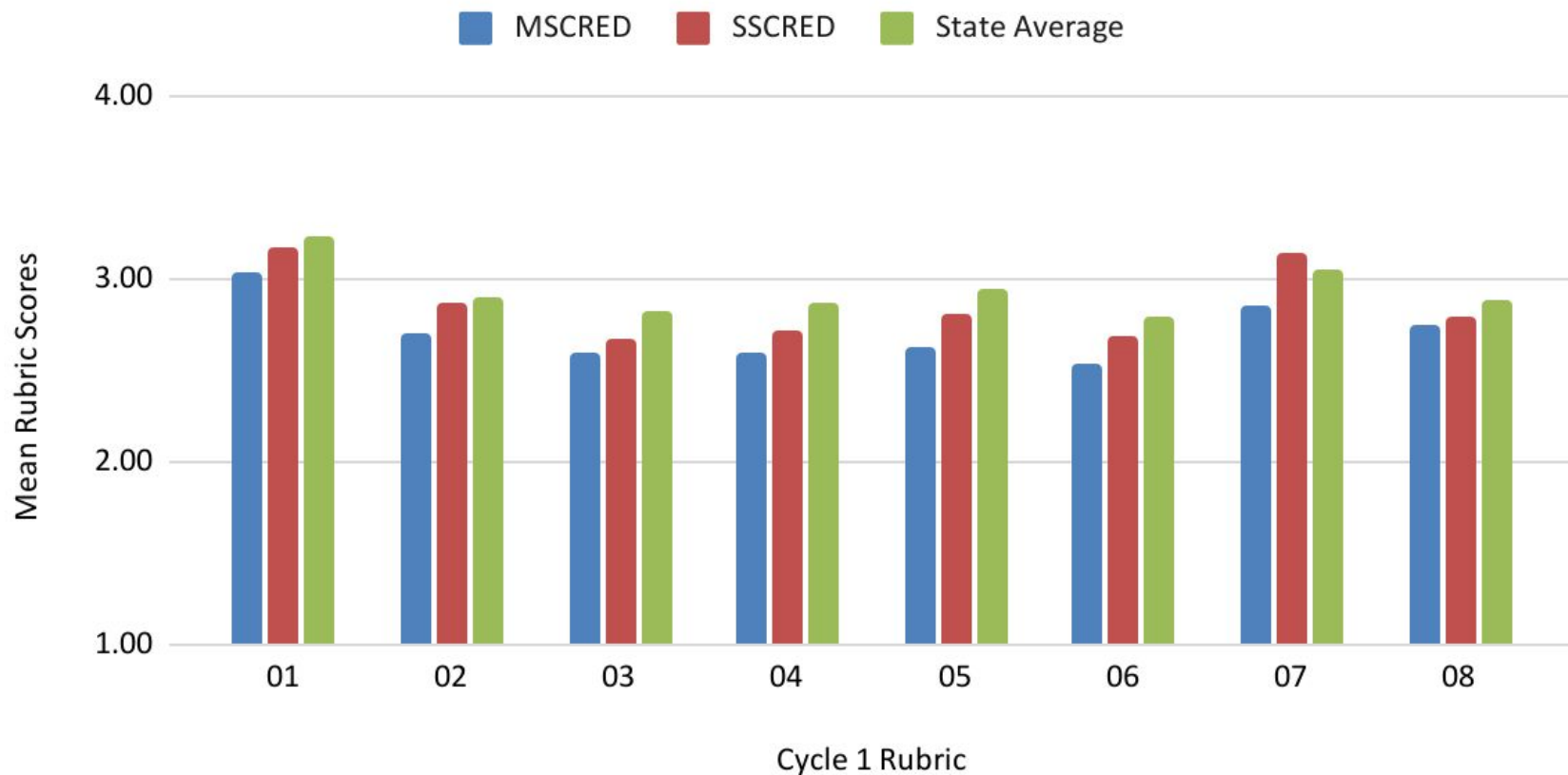
# NDNU Cycle 1 *BEST* Total Mean Scores, 2018-now

Cycle Name	# Takers	# Pass	# Not Pass	% Pass	% Not Pass	Mean Total Scaled Score	Mean Total Scaled Score State
Mult Subj—Literacy 1	84	74	10	88.10%	11.90%	21.10	21.20
Sngl Subj-Art 1	2	2	0	100.00%	0.00%	28.50	25.20
Sngl Subj-English 1	12	11	1	91.67%	8.33%	23.60	24.60
Sngl Subj-Health Science 1	1	1	0	100.00%	0.00%	24.00	20.70
Sngl Subj-Mathematics 1	12	11	1	91.67%	8.33%	23.90	23.50
Sngl Subj-Music 1	2	1	1	50.00%	50.00%	13.00	23.40
Sngl Subj-Physical Education 1	11	10	1	90.91%	9.09%	22.70	23.60
Sngl Subj-Science 1	7	7	0	100.00%	0.00%	24.86	21.90
Sngl Subj-Social Science 1	12	12	0	100.00%	0.00%	23.40	22.90
World Languages 1	12	11	1	91.67%	8.33%	22.80	22.70
TOTAL/CUMULATIVE	155	140	15	90.40%	9.60%	22.79	22.97

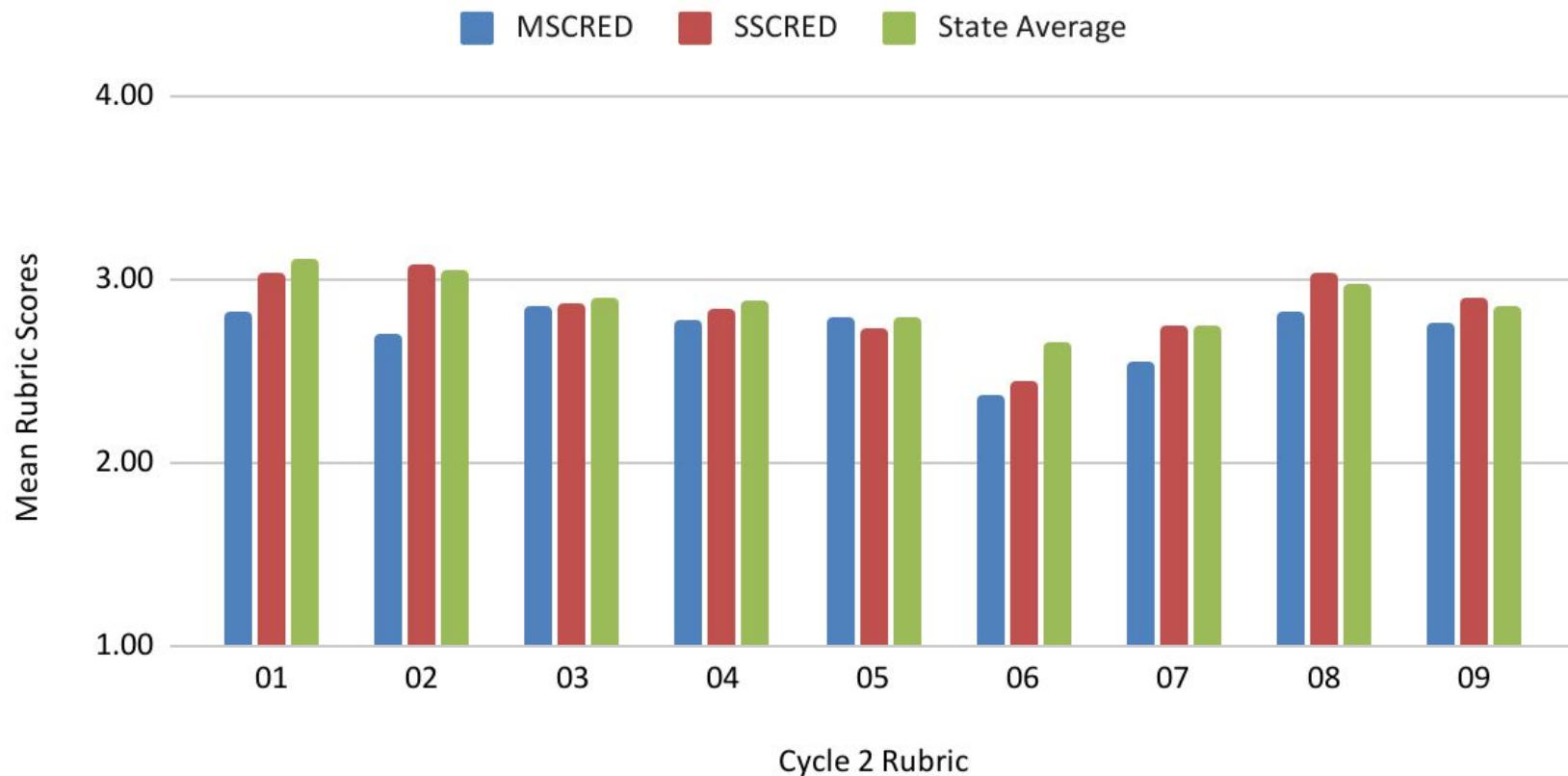
# NDNU Cycle 2 *BEST* Total Mean Scores, 2018-now

Cycle Name	# Takers	# Pass	# Not Pass	% Pass	% Not Pass	Mean Total Scaled Score	Mean Total Scaled Score State
Mult Subj—Math 2	64	57	7	89.06%	10.94%	24.10	23.70
Sngl Subj-Art 2	2	2	0	100.00%	0.00%	26.00	27.00
Sngl Subj-English 2	8	8	0	100.00%	0.00%	25.75	25.80
Sngl Subj-Health Science 2	1	1	0	100.00%	0.00%	23.00	22.10
Sngl Subj-Mathematics 2	8	8	0	100.00%	0.00%	26.63	26.00
Sngl Subj-Music 2	1	1	0	100.00%	0.00%	24.00	25.70
Sngl Subj-Physical Education 2	10	8	2	80.00%	20.00%	21.80	25.70
Sngl Subj-Science 2	6	6	0	100.00%	0.00%	24.17	24.30
Sngl Subj-Social Science 2	9	9	0	100.00%	0.00%	26.56	25.40
World Languages 2	9	9	0	100.00%	0.00%	27.56	25.50
TOTAL/CUMULATIVE	118	109	9	96.91%	3.09%	24.96	25.12

# CalTPA Cycle 1 Rubric Scores, 2018-now NDNU MSCRED, SSCRED, State Average



## CalTPA Cycle 2 Rubric Scores, 2018-now MSCRED, SSCRED and State Average





# CalTPA tasks completed in 2022-23

1. Established and Distributed CalTPA [support resources for University Supervisors](#).
2. Conducted CalTPA Workshop for faculty, which resulted in collaborative work of [NDNU Course Mapping](#) with CalTPA Steps.
3. Presented [CalTPA workshops](#) at both General Ed and Ed Spec teacher candidates' orientation.
4. Updated [NDNU CalTPA Policy Handbook](#) to include remediation procedures for both current students and recent graduates.
5. Conducted CalTPA Research sponsored by CARE-ED and presented our work at CCTE, including distribution of [Infograph](#) and lobby for AB 2047.
6. Completed first semester of [EDU 4886: CalTPA Support](#), co-created and taught by Kelly D and V.
7. Submitted syllabi for future CalTPA support courses to Caryl and Evelia (Registrar)

# Preparing for 2023-24...

1. Starting more CalTPA Support Courses to supplement seminars [current working course number is 4886]
  - a. [EDU 4886, section 1](#): Tuesdays 7:00pm to supplement EDU 4342, 4442 (1st sem Gen Ed)
  - b. [EDU 4886, section 2](#): Tuesdays 7:00pm to supplement EDU 4345, 4445 (2nd sem Gen Ed)
  - c. [EDU 4886, section 4](#): Thursdays 7:00pm to supplement EDU 4230, 4231, 4236 (SPED)
2. Train potential adjunct instructors to take over EDU 4886, section 3 on Mondays TBD (for non-matriculated NDNU students and other special cases)
3. Updated [NDNU Lesson Plan Template](#) (thanks Julie!)
4. Preparing for possible revised CalTPA in 2025, such as RICA embedded in CalTPA Cycle 2
5. Anything else?