

Summary Statistics Graduate Major Field Test in Business

A total of **twenty-seven (27) exams** have been conducted since April 2009 totaling **385 MBA students**. The following data and charts reflect our cumulative results through Spring 2018.

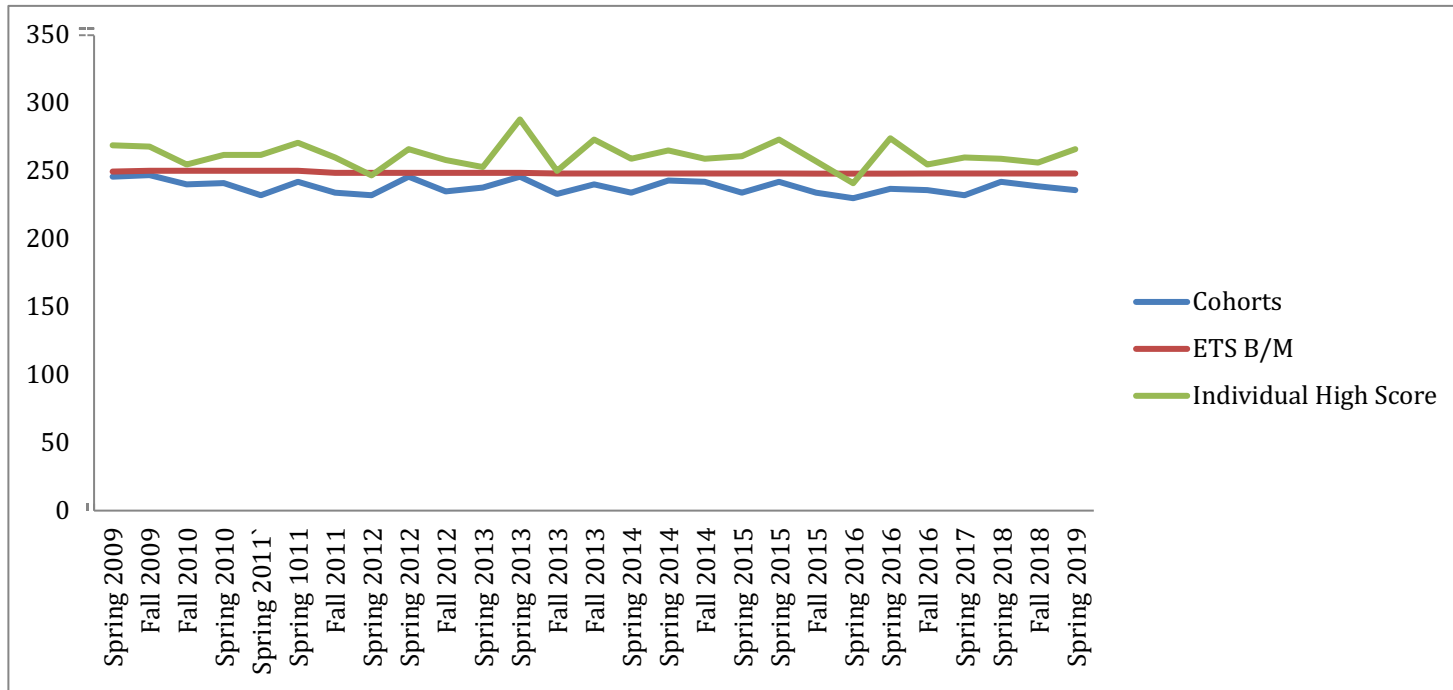
Cumulative Cohort Test Score comparing NDNU against the ETS cohort population:

Cohort	NDNU	ETS Benchmark	NDNU Ind.
Spring 2009	246	249.5	269
Fall 2009	247	250.2	268
Fall 2010	240	250.2	255
Spring 2010	241	250.2	262
Spring 2011`	232	250.2	262
Spring 1011	242	250.2	271
Fall 2011	234	248.9	260
Spring 2012	232	248.9	247
Spring 2012	246	248.9	266
Fall 2012	235	248.5	258
Spring 2013	238	248.5	253
Spring 2013	246	248.5	288
Fall 2013	233	248.3	250
Fall 2013	240	248.3	273
Spring 2014	234	248.3	259
Spring 2014	243	248.3	265
Fall 2014	242	248.3	259
Spring 2015	234	248.3	261
Spring 2015	242	248.3	273
Fall 2015	234	248.1	257
Spring 2016	230	248.1	241
Spring 2016	237	248.1	274
Fall 2016	236	248.4	255
Spring 2017	232	248.4	260
Spring 2018	242	248.2	259
Fall 2018	239	248.4	256
Spring 2019	236	248.4	266

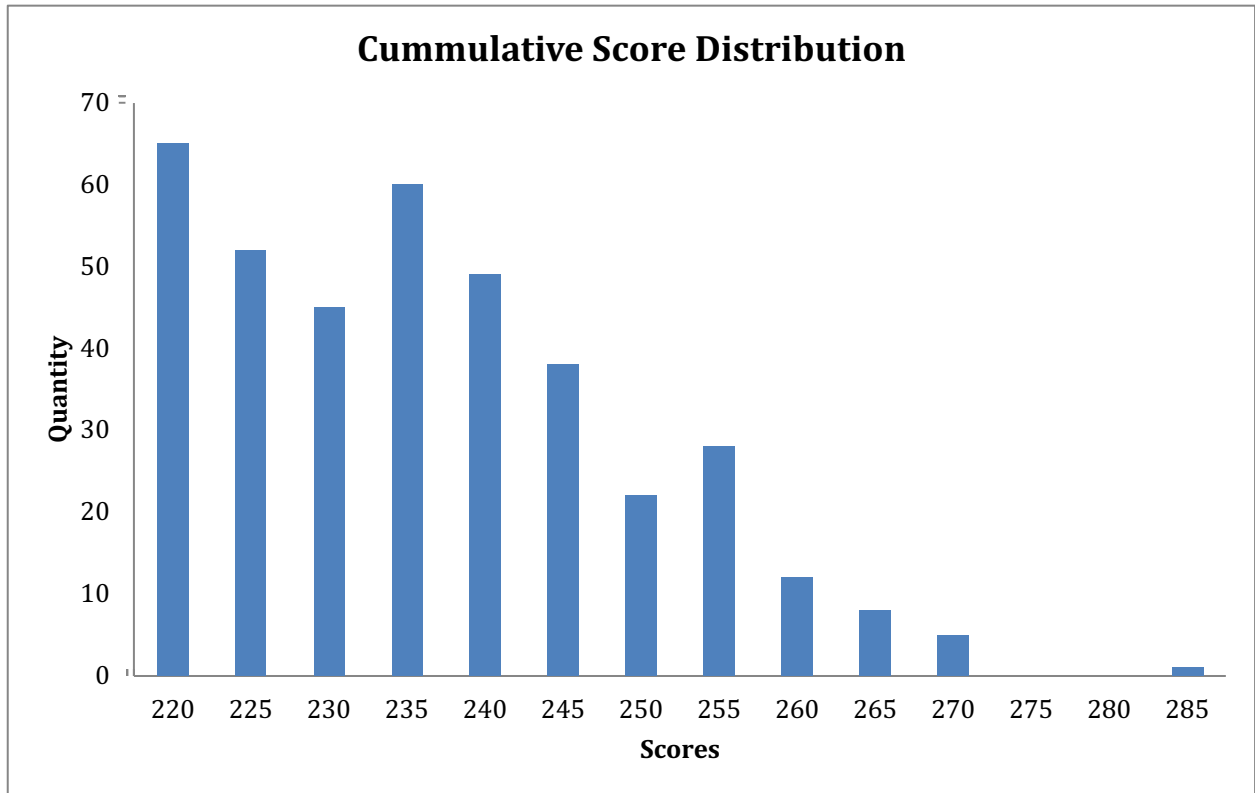
Mean Score: 238.3

Std. Deviation: 5.0

Summary Chart of All Cohorts thru Sprng 2019

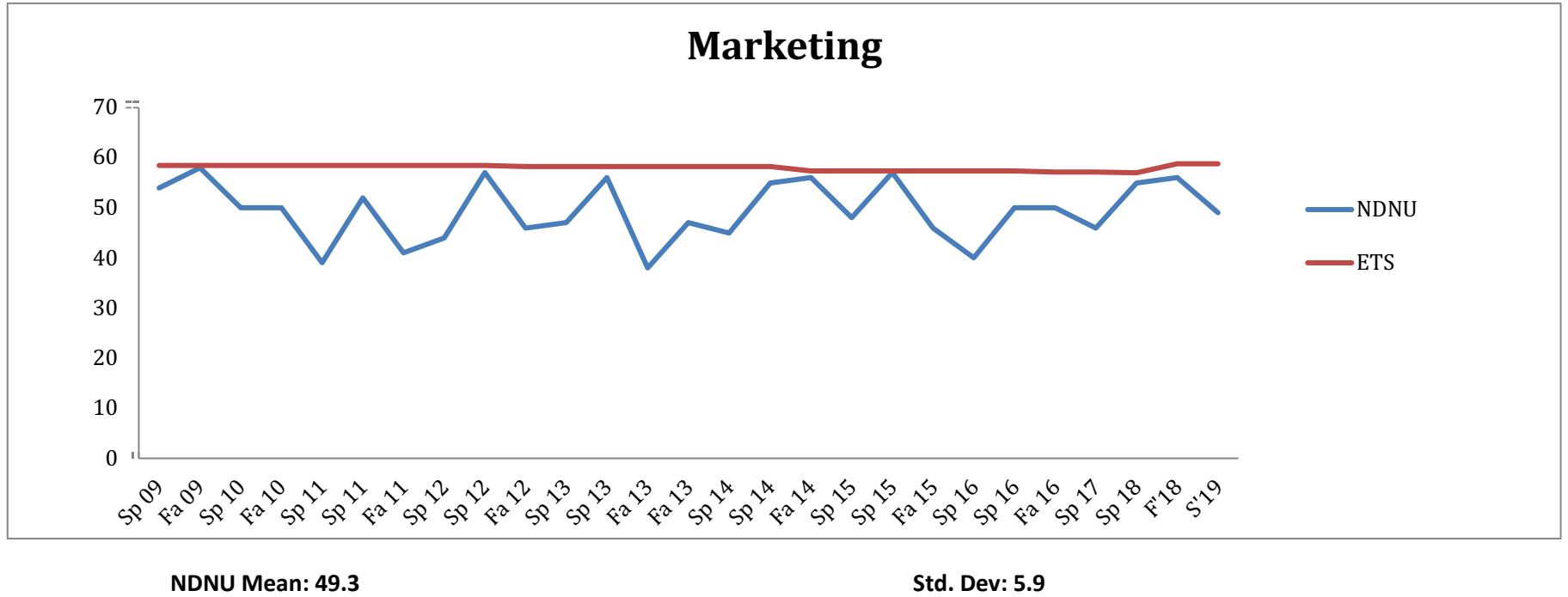


Individual Score Distribution through Spring 2019



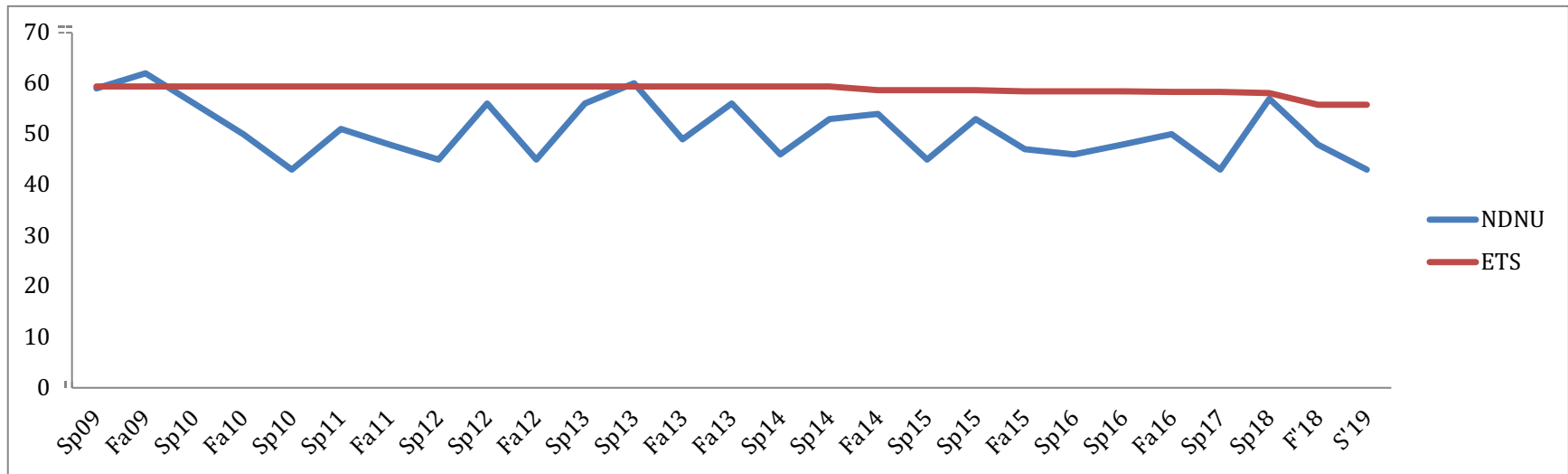
Discipline Specific Scores

Marketing Performance



Management Performance

Management



NDNU Mean: 50.7

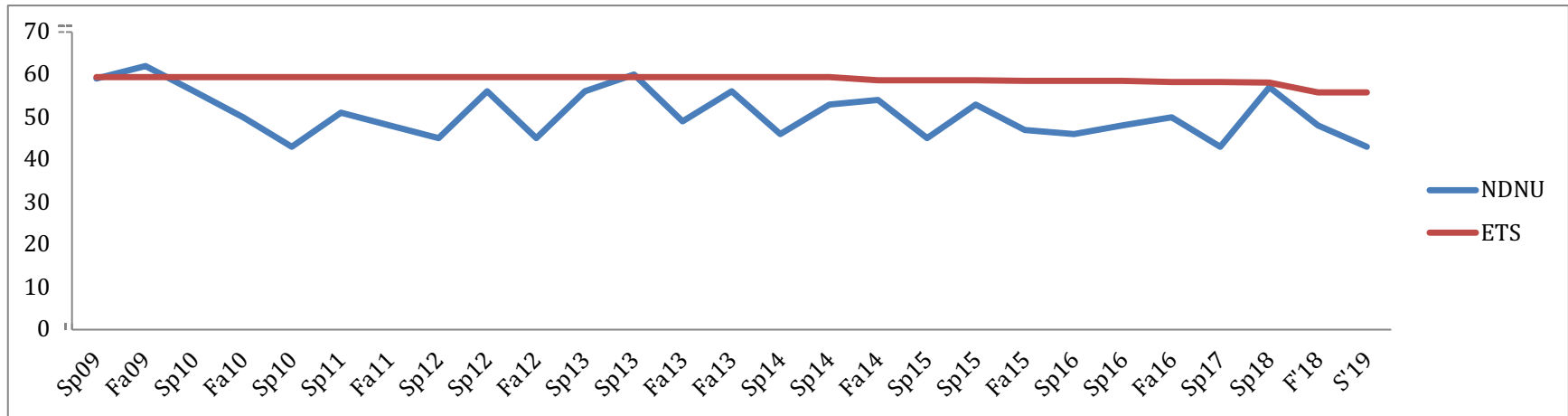
Std. Dev: 5.6

1st 12 Cohort Mean: 52.6

2nd 13 Cohort Mean: 48.7

Finance

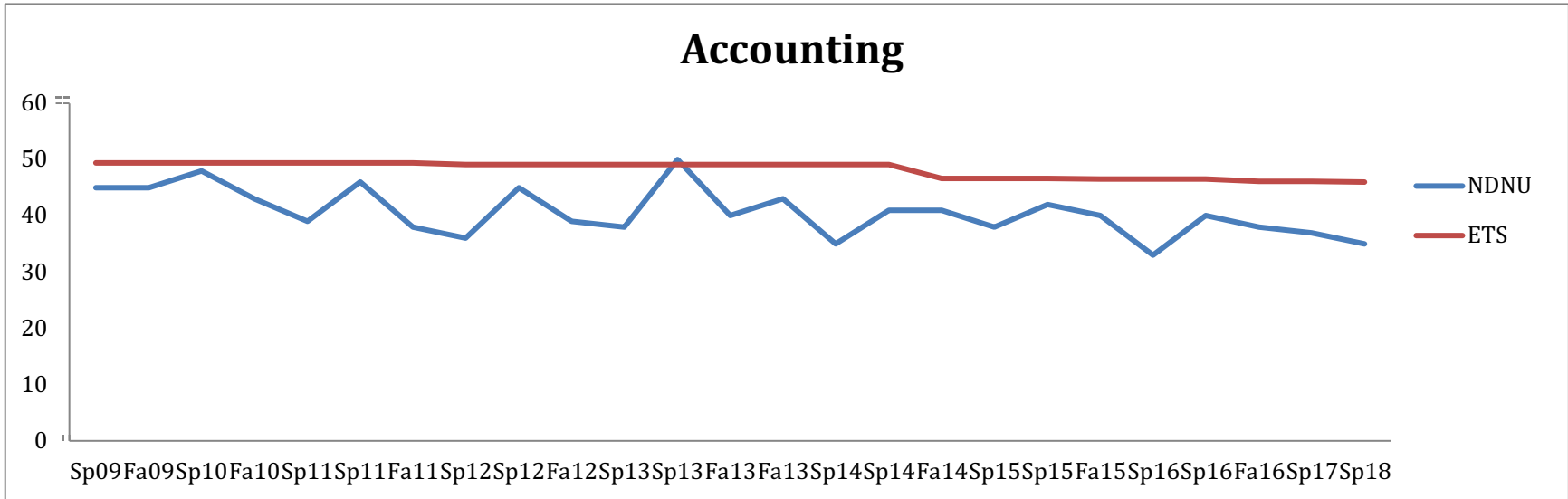
Finance Performance



NDNU Mean: 35.7

Std. Dev: 4.1

Accounting Performance (was Mgrl Account in Spring 09 and changed to Attg thereafter)



NDNU Mean: 40.1

Std. Dev 4.4

Strategy Performance



NDNU Mean: 43.1

Std. Dev: 4.6